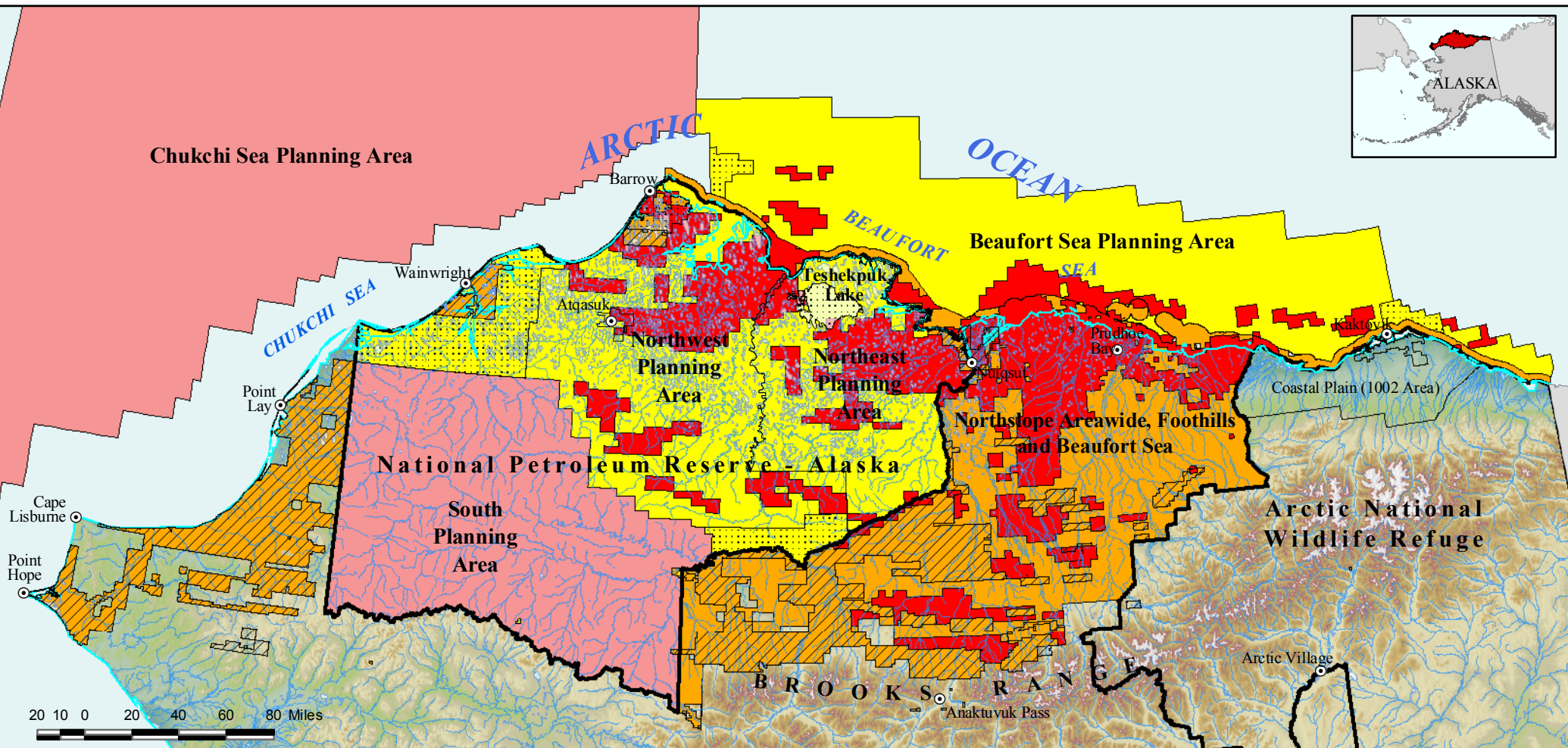


Current and Proposed Oil & Gas Leases on Alaska's North Slope



Map composed by The Wilderness Society, Northern Alaska Environmental Center, and Alaska Center for the Environment, December 4, 2006.

- Sold Federal and State leases
- Active Federal Lease Area
- Proposed Federal Lease Plan Area
- Active State Lease Areas
- ASRC Surface and/or subsurface lands
- Barrow Native Lands

National Petroleum Reserve - Alaska (Federal BLM)

- * *Northeast Planning Area*
4.6 million acres - 100% opened to lease in 2006
 Lake deferred for an unspecified amount of time
 Court canceled September 2006 lease sale
 Supplemental EIS expected July 2007
 Next lease sale in 2007
- * *Northwest Planning Area*
8.8 million acres - 100% opened to lease 2004
 Open to exploration but deferred from development until 2014
 Next lease sale in 2007
- * *South Planning Area*
9.2 million acres
 Preliminary alternatives expected May 2007

Arctic Ocean (Federal MMS)

- * *Beaufort Sea Planning Area*
9.4 million acres
 Lease Sale 186- 97% offered to lease in 2003
 Lease Sale 195- 97% offered to lease in 2005
 Next Lease Sale (202) in March 2007
 Barrow and Kaktovik Whaling Deferrals
- * *Chukchi Sea Planning Area*
33.8 million acres
 Next Lease Sale (193) in 2007

State

- * *Northslope Areawide, Foothills and Beaufort Sea*
14.4 million acres in active lease plan areas
4.0 million acres in existing leases